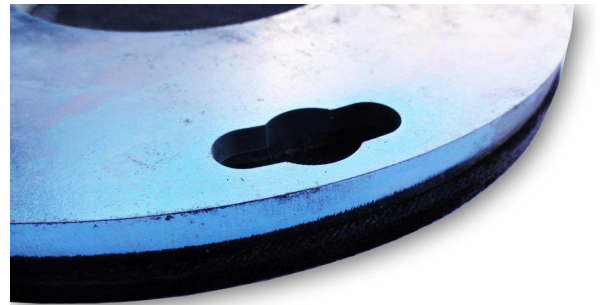




RESIN HOLDER DISCS

Resin holder disc for secure mounting of resin floor polishing pads. For maximum life use in conjunction with WORX+ Rip Change resin mounting discs.



FEATURES & BENEFITS:

- Rubber layer allows individual movement of resin pad for reliable scratch patterns (unlike what is produced with rigid resin mounting systems).

APPLICATION:

- Floor honing & polishing where Velcro attachment of abrasives required.
- Buffing/burnishing of hard floors & sealers.

SPECIFICATIONS:

- Zinc plated 10mm steel backing plate.
- 6mm rubber layer for correct cushion of resin pad.
- High strength Velcro attachment surface.
- Assembled using high temperature adhesive.

